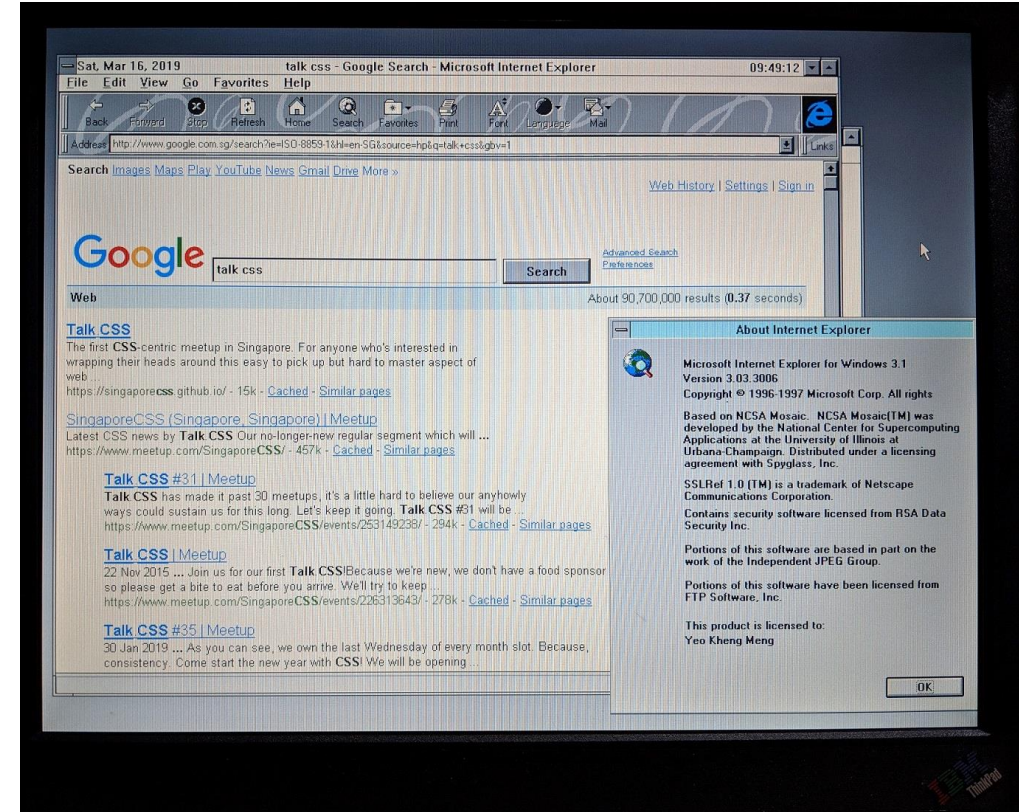
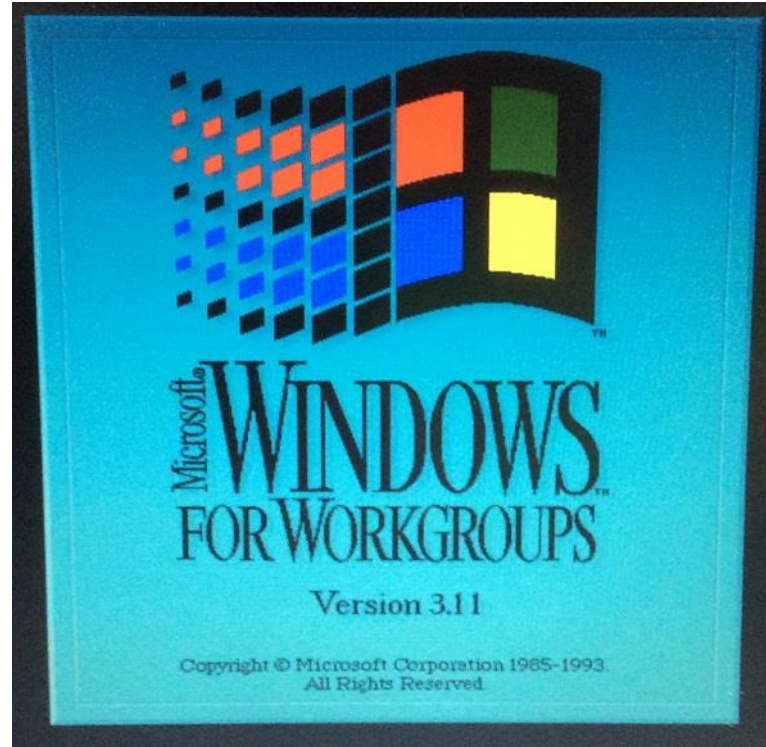
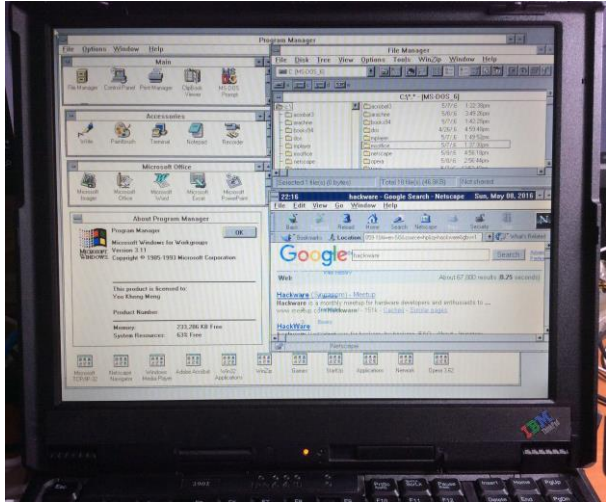


Can your site work on IE3?



Talk CSS #39 (22 May 2019)

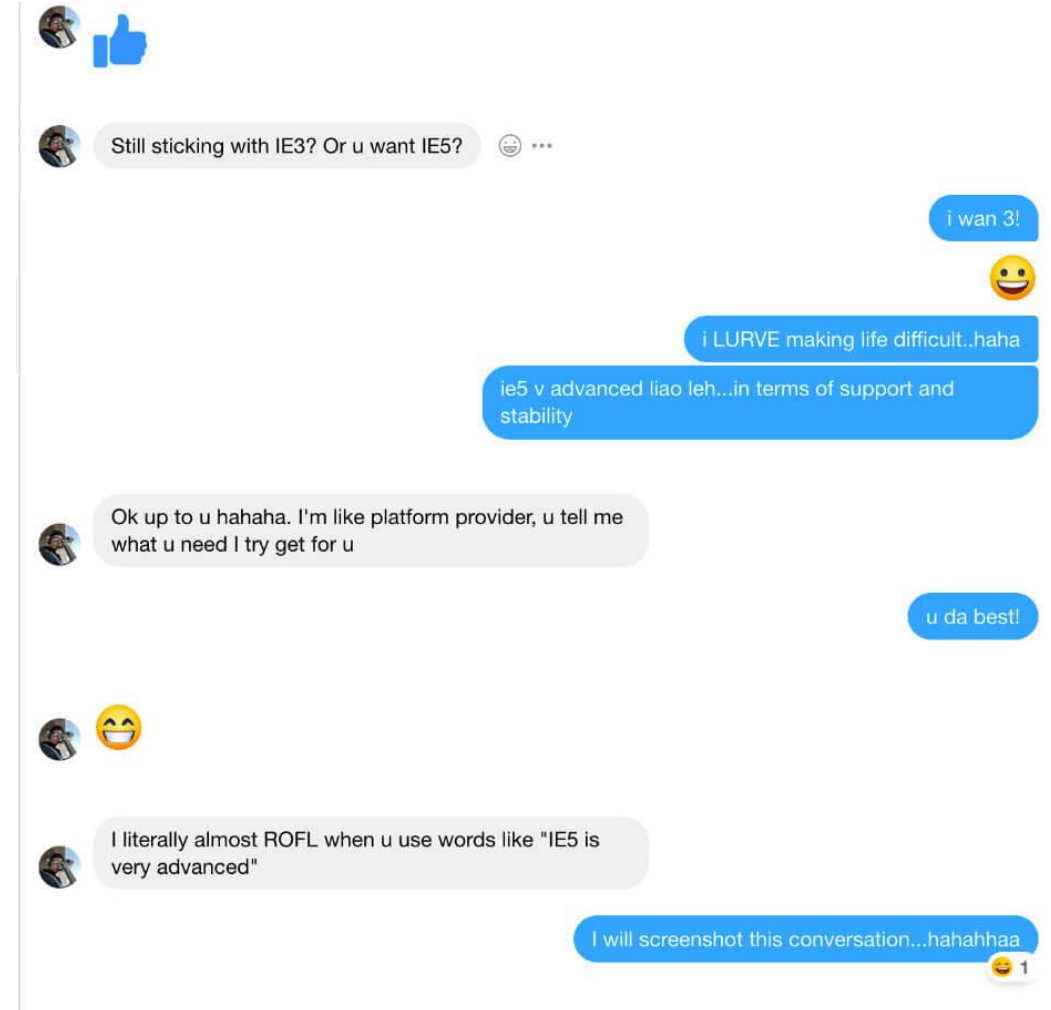
By:
Chen Hui Jing @hj_chen
Yeo Kheng Meng @yeokm1

Agenda

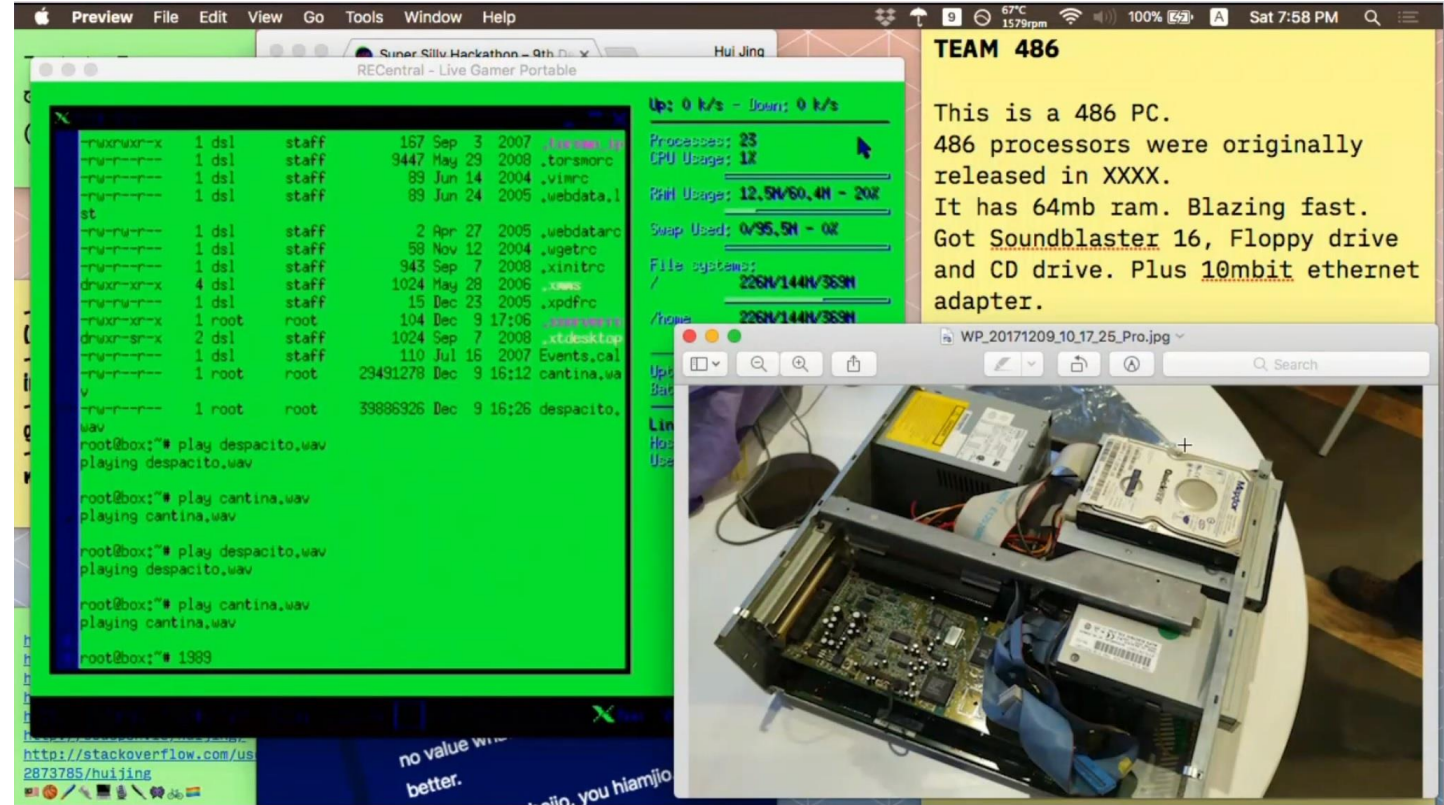
1. Background
2. Quick Live Demo
3. How I got DOS 6.22, Win3.1 and networking to work
4. Live coding/debugging

Motivation

- Hack && Tell Singapore - March 2019

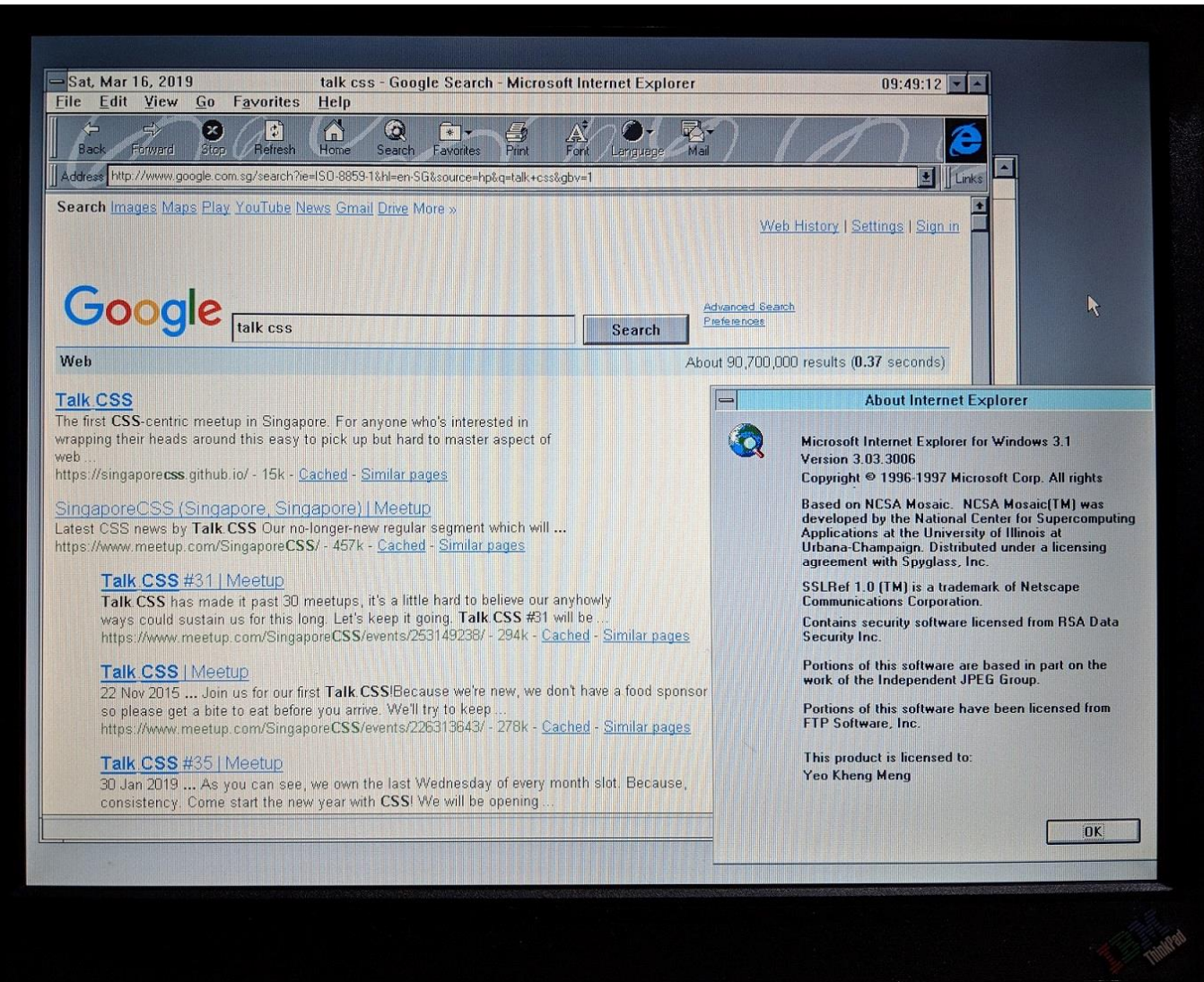


Team 486 at Super Silly Hackathon (Dec 2017)



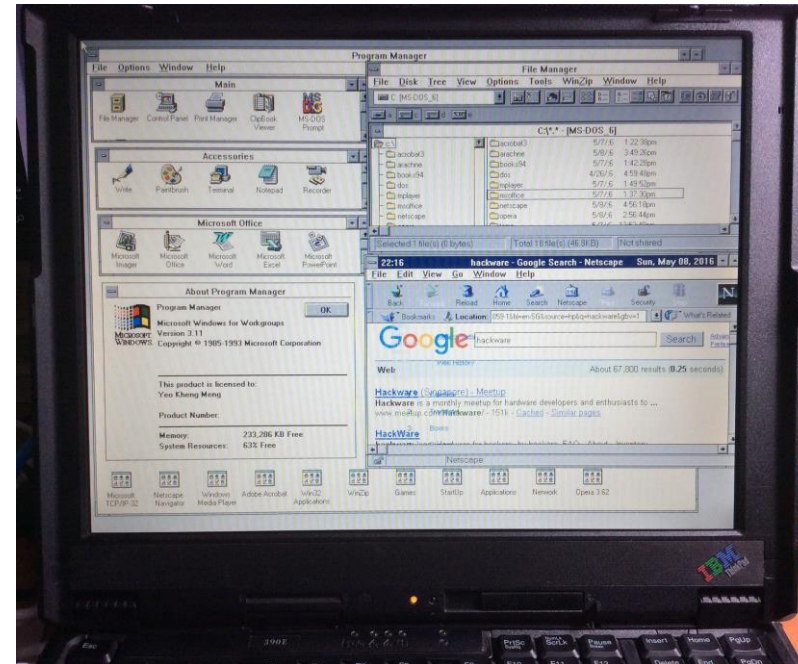
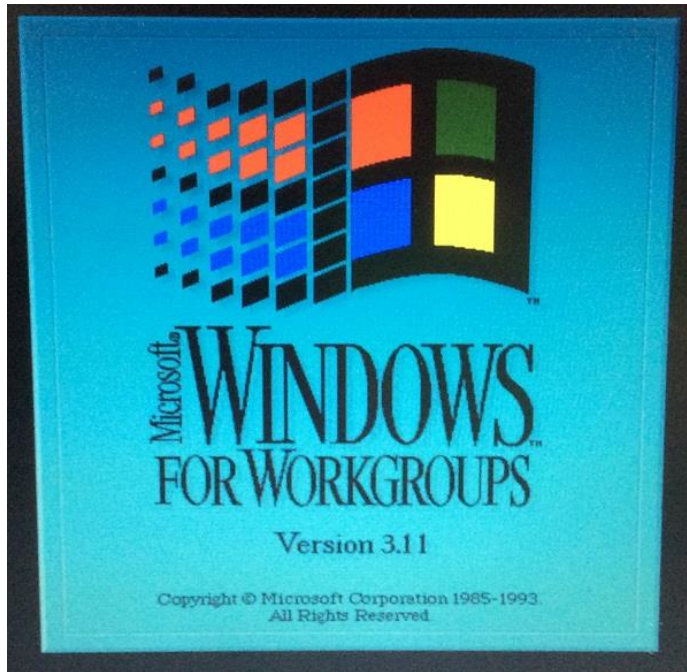
- Huijing and I
- 486 PC + Damn Small Linux + Web Page Hosting + Playing Music

What is Internet Explorer 3 (IE3)?



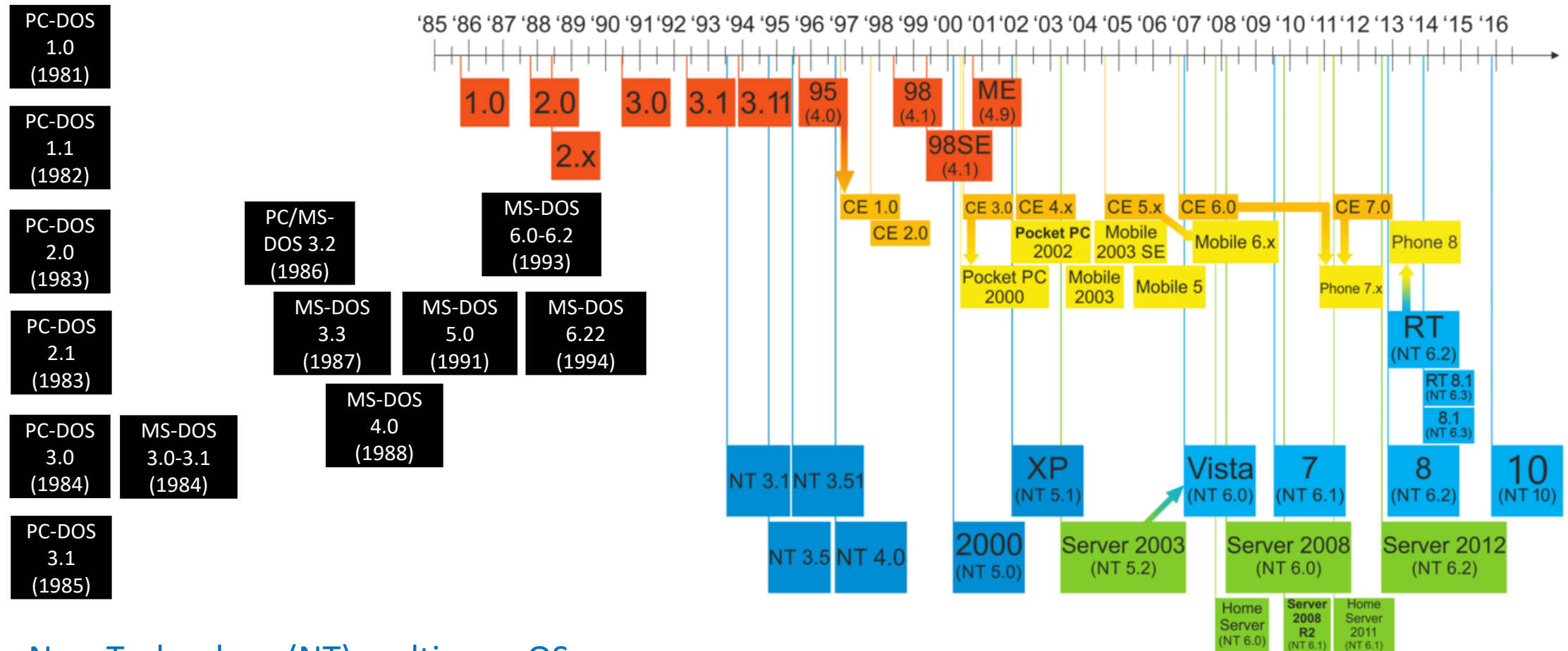
- First released in 1996
- Final Update (1998): 3.03 SP1, 3.03.3006
- Supported OSES:
 - Windows 3.1, 95, NT3.x, NT 4.0
 - System 7
 - Mac OS 8
- First browser to support CSS
- <https://www.w3.org/Style/CSS/msie/>

So what is Windows 3.1x?



- Windows 3.1x is a series of 16-bit operating systems by Microsoft
- Windows 3.1 was released on April 6, 1992
- Windows for Workgroups 3.11 was released on August 11, 1993
- WFW first to have inbuilt networking facilities
- All Windows 3.1x versions requires \geq MS-DOS 3.1 to be installed first
- https://en.wikipedia.org/wiki/Windows_3.1x

Microsoft Timeline of DOS/Windows

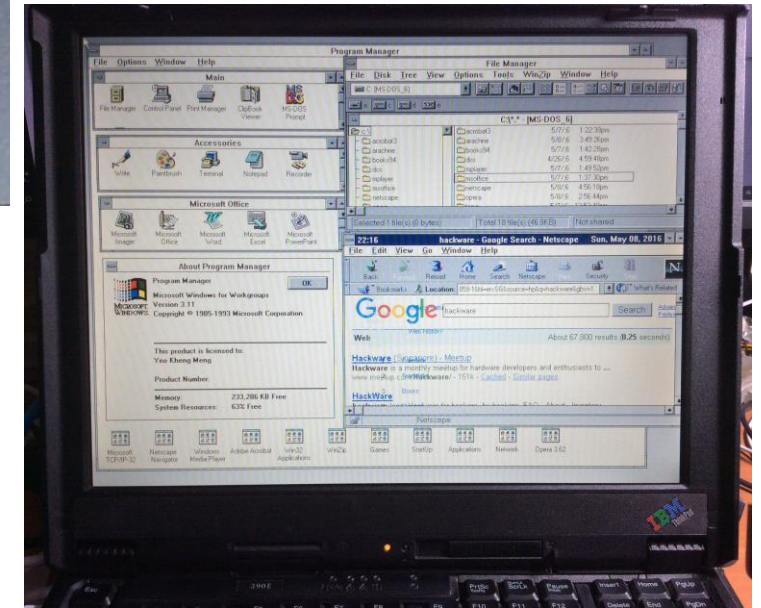
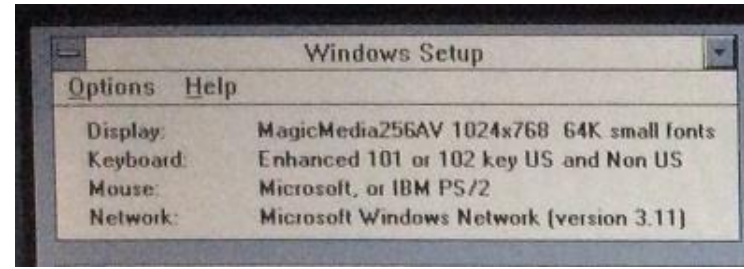


- New Technology (NT) multi-user OS
- DOS-based and Windows 9x single-user OS
- PC-DOS (IBM Personal Computer Disk Operating System)
- MS-DOS (Microsoft Disk Operating System)

Quick demo

IBM Thinkpad 390e

- Released in 1999 with Windows 98
- Win3.1 drivers provided by IBM
- Specifications
 - Intel Mobile Pentium II 300Mhz**
 - Intel 440BX chipset
 - NeoMagic Media256AV 2.5MB VRAM
 - 384MB SDRAM**
 - ESS Solo-1 Audio
 - 13.1" 1024×768
 - PATA hard drive (I used an CF card with CF-PATA converter)**
 - CDROM + Floppy combo**
 - Serial, Parallel, PS/2, **USB 1.0**, IrDA
 - 2x Cardbus slots**
 - No Ethernet
 - 4.5cm thickness
 - 3.4kg weight
- US\$2700 (1999) = US\$4100 (2018) = SG\$5600 (2018)



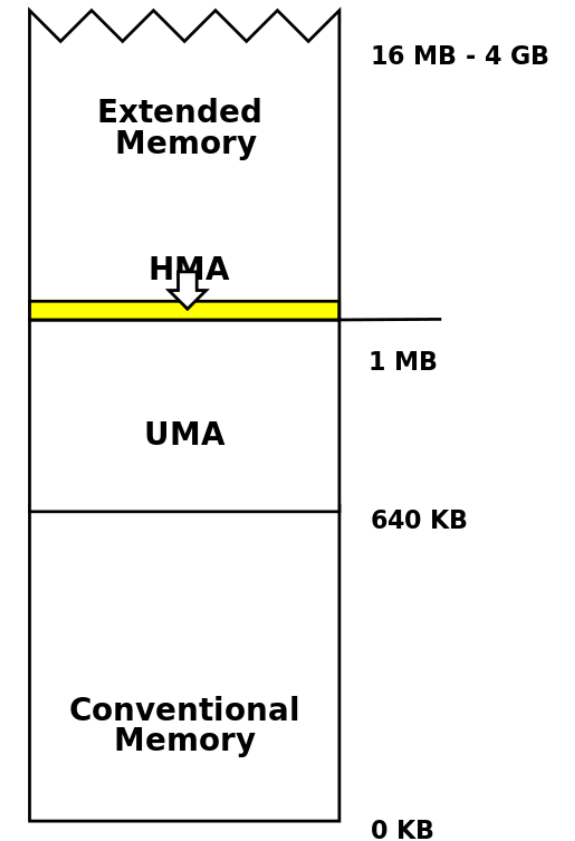
Installing DOS 6.22 and Win 3.1



- 4x DOS 6.22 diskettes
- 8x WFW 3.11 diskettes
- Mac OS X El Capitan onwards does not support USB Floppy drives
- Download links:
 - <https://winworldpc.com/product/ms-dos/622>
 - <https://winworldpc.com/product/windows-3/wfw-311>

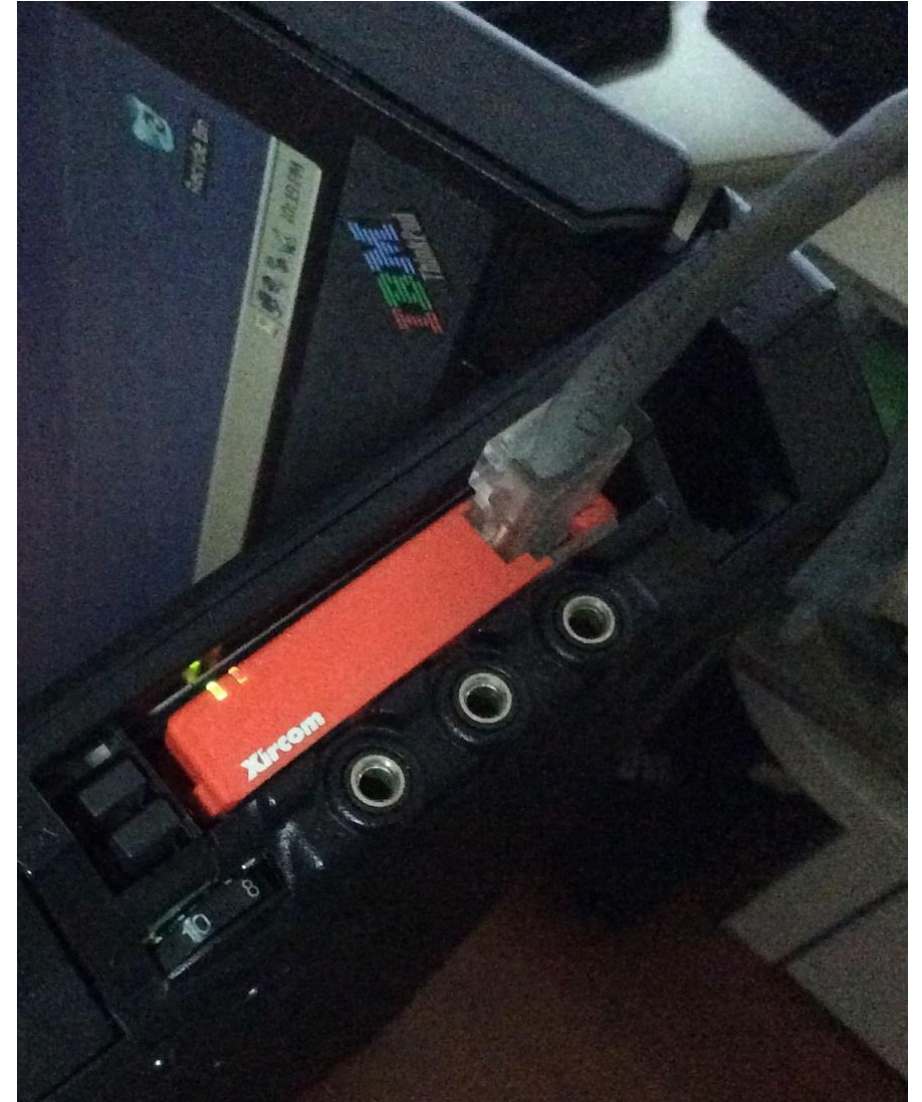
CONFIG.SYS and AUTOEXEC.BAT

- Important DOS configuration files
- CONFIG.SYS
 - Loads drivers on startup
 - HIMEM.SYS: Extended Memory Manager
 - DOS=HIGH: Load DOS to HMA to save conventional memory
 - CDROMDRV.SYS: Toshiba CD driver
 - POWER.EXE: Sends x86 HALT instruction to save CPU power when idle
- AUTOEXEC.BAT
 - Stands for AUTOMATIC EXECution
 - Batch file that starts at end of DOS boot process
 - SMARTDRV.EXE: Disk caching
 - MSCDEX.EXE: Assign CD drive letter to driver
 - DOSKEY.COM: Terminal history, auto-completion
 - CTMOUSE: Modern DOS mouse driver for PS/2 mouse



Network Connection Attempt 1

- PCMCIA/Cardbus network adapter
- Xircom Realport Cardbus Ethernet 10/100
- IBM's Cardbus slot DOS drivers DID NOT WORK!!!



Network Connection Attempt 2

- Parallel Port network adapter
 - Xircom Pocket Ethernet PE3-10BT
 - 10Mbps
 - Powered by PS/2 passthrough cable
- Wifi-Ethernet Bridge
 - TP-Link TL-WR702N
 - 100Mbps
 - 802.11n
- DNS needs manual configuration

